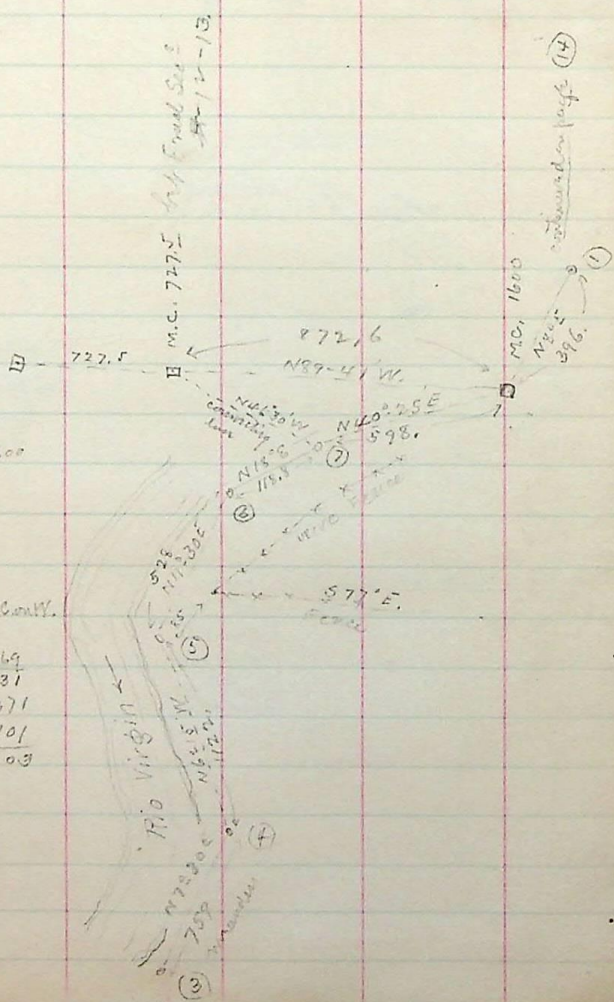


Traverse of meanders on previous page (5)

	clus	N	S	E	W.
N 73 1/2° E	5.00	1.44		4.79	
N 47° E	11.50	7.94		8.40	
N 25° E	8.00	7.25		3.38	
N 7 1/2° E	.96	.95		.12	
		17.49		16.69	

N40-25E  
 291. F. L. V. S.  
 577 " N 8.75 W  
 578 " " S.  
 579 To M.C. 1600



to find dist bet M.C. on 64 MC and N.Y.

sin 43°-11	=	9.835269
cos " " "	=	0.767731
sin 86°-55	=	9.999371
598.	=	2.776701
872.6		2.940803
727.5		
1600.1		